

Write the note name under each note.



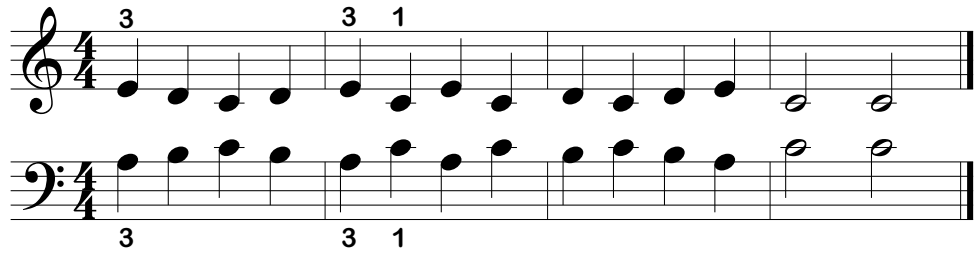
Finger Funnies CD 8 & 9

Fin - ger fun - nies for you.	We don't want to bore you.

Fin - gers mov - ing all just right.	Makes a ver - y hap - py sight.

Accompaniment (Student plays one octave higher)

Play these step and skipping finger patterns several times.



Skipping Smartly

CD 24 & 25

Skip - ping more in this new song. Skip - ping as we play a - long.

Fin - gers each have played their part. Mak - ing you look ver - y smart.

Accompaniment (Student plays one octave higher)

Whole Note



A whole note receives four beats or counts.



Rhythm Patterns

Play each line on any key.

1 $\frac{4}{4}$ ♩ ♩ ♩ ♩ | ○ | ♩ ♩ ♩ ♩ | ○ ||

2 $\frac{4}{4}$ ♩ ♩ ♩ ♩ | ○ ♩ | ♩ ♩ ♩ ♩ | ○ ||

3 $\frac{4}{4}$ ♩ ♩ ○ | ♩ ♩ ♩ | ♩ ♩ ♩ ♩ | ○ ||

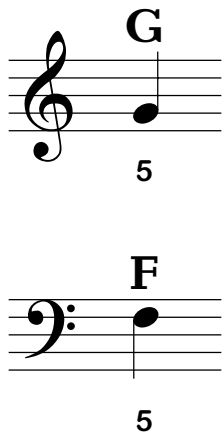
Work Together

CD 26 & 27

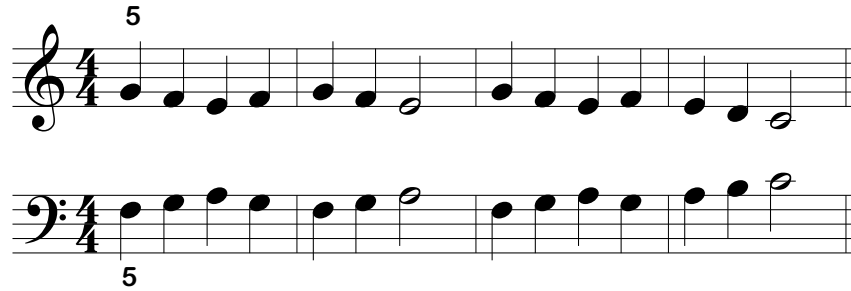
Work to - geth - er up and down. Left hand, right hand hear that sound.

Each is say - ing that you're play - ing one fine song.

New Notes



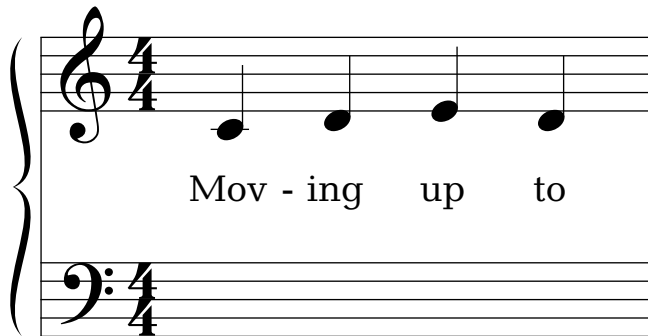
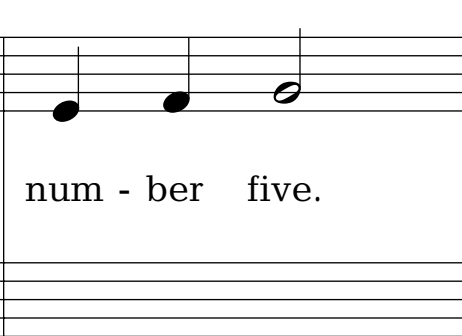


Play these five-finger patterns several times.



Moving To Number Five

CD 38 & 39



			
Mov - ing up to	num - ber five.	It makes mu - sic	come a - live.

			
Mov - ing down is	al - so fun.	Keeps your fin - gers	on the run.

Play each hand alone before playing both hands together.



Right And Left Together

CD 52 & 53

Two hands play a du - et. Can you hear both parts yet?

First a - lone and then they join. Right and left hands have met.

Down By The Station

CD 72 & 73

Musical notation for the first system of the piece. It consists of two staves: a treble clef staff and a bass clef staff. The time signature is 4/4. The melody in the treble clef starts on a middle C and moves up stepwise. The bass clef accompaniment consists of a simple harmonic pattern. A measure rest is indicated by a '4' below the first measure of the bass staff.



Musical notation for the second system of the piece. It consists of two staves: a treble clef staff and a bass clef staff. The time signature is 4/4. The melody in the treble clef continues with a series of eighth notes. The bass clef accompaniment continues with a simple harmonic pattern. A measure rest is indicated by a '4' below the first measure of the bass staff.

Musical notation for the third system of the piece. It consists of two staves: a treble clef staff and a bass clef staff. The time signature is 4/4. The melody in the treble clef features dotted rhythms. The bass clef accompaniment continues with a simple harmonic pattern. A measure rest is indicated by a '5' above the first measure of the treble staff.